

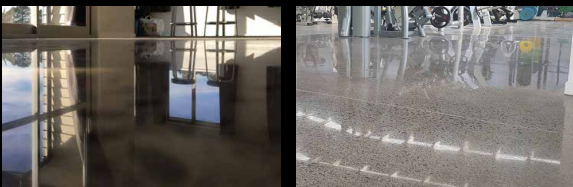


# LUX Stone

## Polished Concrete System

CCS LuxStone Polished Concrete System is a specialised treatment process to transform both new and existing concrete into a captivating, sleek and contemporary floor. The process involves the application of proprietary compounds which react to enhance and strengthen the concrete through the stacking of silica. During this treatment, the concrete is also subject to a specific grinding and refining methodology to suit individual concrete characteristics, enabling the surface of the concrete to be polished effectively.

Various levels of finish can be created depending on individual needs and requirements. This includes the amount of stone visible in the floor and gloss and reflectivity levels. Polished concrete has become an extremely popular choice for both residential and commercial projects as it ticks many boxes including the natural aesthetics and long life cycle it offers. An experienced contractor can achieve the appearance required by adjusting the process to control the amount of stone/sand, gloss and reflectivity.



*The number of steps varies depending on the level of gloss or reflectivity required.*

### Features and Benefits

Besides the wonderful aesthetics, one of the stand out benefits of polished concrete is the low maintenance requirement. Polished concrete flooring is easy to keep clean with minimal effort necessary in order for it to look spotless and hygienic at all times. An occasional sweep or vacuum and damp mop with a neutral floor cleaner is all that is required. This eliminates the time and effort required to apply expensive resin or wax coatings. A polished concrete floor is also extremely hardwearing and is suitable for high traffic areas. In addition to having an elegant and luxurious appearance, the intense light reflectivity generates a vibrant and fresh appearance suitable for commercial environments such as retail centres and office suites.

Polished concrete is also an excellent choice where other high gloss and more expensive flooring types such as granite and marble are unaffordable. Due to the treatment compounds applied, a CCS LuxStone Polished Concrete Floor is up to 40% harder and far less susceptible to abrasion.

- **Green** – created from naturally sustainable material
- **Durable** – suitable for high traffic areas
- **Aesthetic** – visually captivating and versatile
- **Eco friendly** – has a high thermal mass
- **Low maintenance** – little upkeep required
- **Cost effective** – extremely low life cycle costs
- **High reflectivity** – brightens with natural light



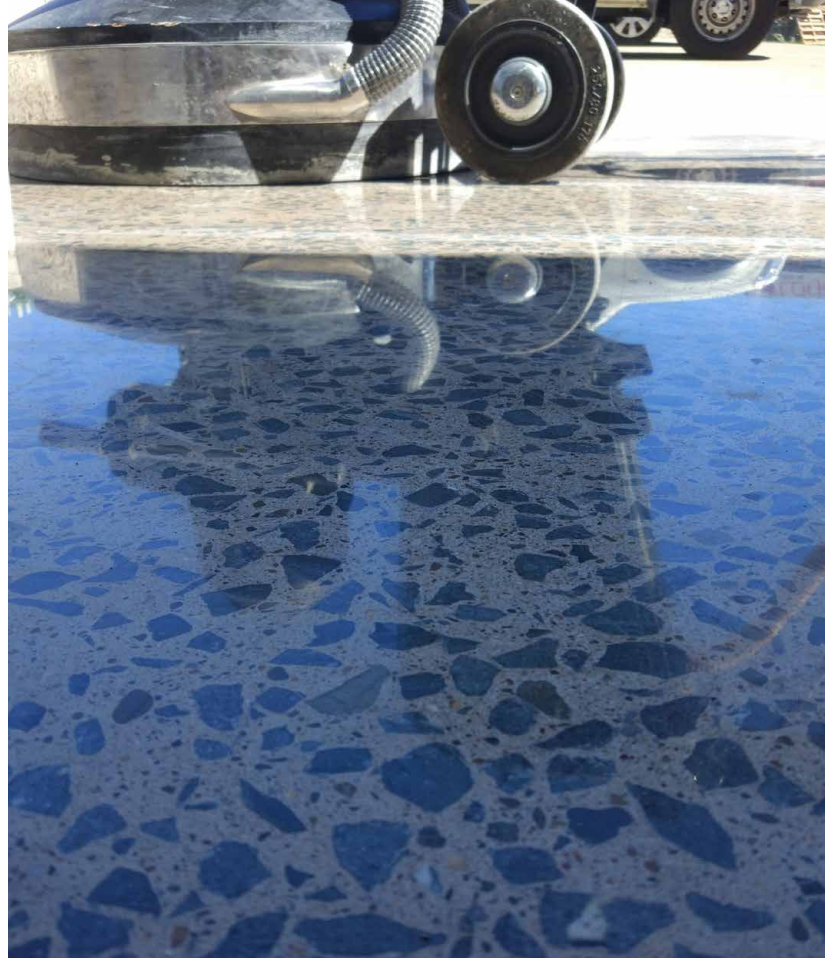
## Is all concrete polishable?

Almost any structurally sound concrete surface can be polished. There are some exceptions, however, such as where the existing concrete is overly soft, severely spalled and porous or widespread repairs and fixing is required.

New concrete should be allowed to cure for 14 to 28 days depending on climatic conditions and location to ensure enough strength and hardness before polishing.

## Installation Time

CCS LuxStone Polished Concrete System installation time relates to size of job and level of depth, clarity and gloss required. As an example, an area of 200m<sup>2</sup> with a high gloss finish would usually take 3-5 days to complete depending on the hardness and condition of the concrete in addition to the type and size of the grinding equipment used.



## Cost Comparison

In comparison to many other coatings and floor types polished concrete offers one of the lowest life cycle costs. Its long lifespan and low maintenance requirements makes it an extremely sensible and practical option for just about any project where aesthetics, longevity and upkeep costs are paramount.

Flooring Type	Approximate Installed Cost per m <sup>2</sup>	Estimated Annual Maintenance per m <sup>2</sup>	Expected Life – Years	Likely 10 Year Life Cost per m <sup>2</sup>
Acrylic Coating	\$10-\$15	\$8.50	1	\$95-\$100
Epoxy Coating	\$25-\$55	\$10.00	3-5	\$125-\$155
Urethane Coating	\$35-\$75	\$10.00	4-7	\$135-\$175
Cementitious Overlay	\$55-\$85	\$8.50	10+	\$140-\$170
Sheet Vinyl	\$40-\$80	\$10.00	9	\$140-\$180
Vinyl Composition Tile	\$45-\$75	\$10.00	10	\$145-\$175
Carpet	\$40-\$100	\$10.00	5-10	\$140-\$200
Ceramic Tile	\$50-\$100	\$10.00	10	\$150-\$200
Natural Stone Tile	\$50-\$150	\$10.00	10-15	\$150-\$250
Cement Terrazzo	\$120-\$190	\$10.00	10	\$220-\$290
Epoxy Terrazzo	\$120-\$200	\$10.00	10	\$220-\$300
<b>Polished Concrete</b>	<b>\$50-\$100</b>	<b>\$5.00</b>	<b>20</b>	<b>\$100-\$150</b>

Visit [www.concretecoloursystems.com.au](http://www.concretecoloursystems.com.au)  
 Phone 1800 077 744  
 Samples [info@concretecoloursystems.com.au](mailto:info@concretecoloursystems.com.au)  
 Follow [f CCS.Colours](https://www.facebook.com/CCS.Colours) [concretecoloursystems](https://www.instagram.com/concretecoloursystems)



CCS uses computer generated imagery (CGI) to provide graphical representations of our products where actual photos are not available. The colours and finishes of the products featured within all CCS imagery are as close to the CCS range as CGI, photographic lighting and our printing processes allow. Different camera angles, although not designed to be misleading, can sometimes distort actual size and distances. We recommend checking your chosen colour against a sample of the product before purchasing as varying light conditions and limitations of the printing process affect colour tones. CCS are marketed and distributed by River Sands Pty Ltd ABN 41 009 919 215, trading as Concrete Colour Systems.